



鄰舍輔導會

The Neighbourhood Advice-Action Council



社會福利署資助服務
Subsidised Service by
the Social Welfare Department

啟康幼兒中心 Child Enlightenment Centre



Purpose

The Child Enlightenment Centre aims at providing a safe, comfortable environment with enriched learning experience for children with special need from birth to 6 years of age. By adopting a person-centered approach and encouraging family participation with social integration, we aim to satisfy a child's multi-faceted needs for growth, as well as foster a good foundation. We collaborate and support families to bring happiness and fulfillment to every child.

Objectives

Special Child Care Centre : Provides special training and care for moderately and severely disabled children under the age of 6 to facilitate their growth and development, helping them prepare for primary education and establish a good foundation for future development.

Early Education and Training Centre : It is designed mainly for disabled children from birth to the age of two, providing them with early intervention programmes with particular emphasis on the role of the disabled child's family. Disabled children aged two to under six can also receive the service if they are not concurrently receiving other pre-school rehabilitation services, which will facilitate their integration into the mainstream education system.



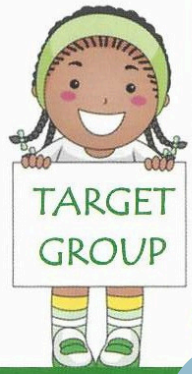
- 1) **Special Child Care Centre service (SCCC)**
 - * We provide centre-based intensive training and caring in weekdays.
- 2) **Early Education and Training Centre (EETC)**
 - * We provide early interventional services to prepare children for mainstream education.

1) Special Child care Centre Services (SCCC)

* The target group for SCCC services is moderately and severely disabled pre-school children from 2 to 6 years of age.

2) Early Education and Training Centre (EETC)

- * Children with disabilities from birth to 2 years of age
- * Children with disabilities from 2 to 6 years of age on a waiting list for other pre-school rehabilitation services, or not receiving other pre-school rehabili-



Our team is composed of registered Social Workers, Physiotherapists, Occupational Therapists, Speech Therapists, Nurse and Special Child Care Workers. We regularly communicate with parents to design "Individual Educational Programs" (IEP) incorporating our various professional teams' input including therapy, nursing and training aspects.

1 Developmental Needs Assessment by Professional Teams



Our team provides holistic and professional assessment service, including sensation, physical, language, social integration and adaptation, self-care, nursing care, etc. The results will provide a direction for designing each ITP

2 Experimental Training

Our centre emphasizes leaning from experiences in their daily learning and sensational environment to bolster children's interests, physical abilities, language and social capabilities, emotion, art and cultural development.



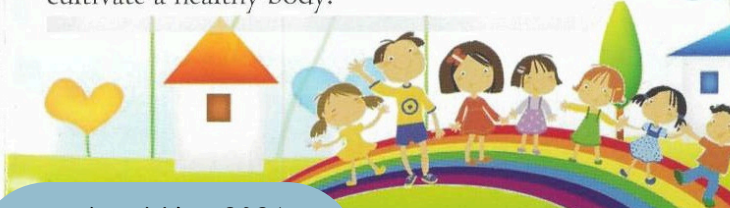
3 Professional Therapeutic Services



Our Physiotherapist, Occupational Therapist Speech Therapist will provide both individual and group training to enhance the physical, sensational and language abilities.

4 Nursing Service

Our nurse offers a comprehensive health program including: caring guidance, health need management and weight monitoring to cultivate a healthy body.



CONTACT

Address : Wing B, G/F., Pok Tai House,
Pok Hong Estate, Sha Tin,
New Territories

Tel : 2635-9668

Fax : 2635-9899

E-mail : cen@naac.org.hk



Application Procedures

Application can be made through Child Assessment Centre (CAC), Hospitals, Clinics, Integrated family Service Centre (IFSC), Clinical psychologists, Doctors and Social Workers. Then, referral will be sent to us via the Central Referral System (CRSR Rehab) of Social Welfare Department. Application of Extended Hours Service (EHS) or Occasional Child Care Service (OCC) can be made directly through our social worker.

Opening Hours

Monday to Friday (Except Tuesdays) : 8:30am - 5:30pm

Tuesday : 8:30am - 8:00pm

Saturday : 9:00am - 5:00pm

Sunday and Public Holiday : CLOSED

Service Hours

EETC : Same as opening hours

SCCC < Monday to Friday > : 8:30am - 5:00pm

(Core Service) : 8:30am - 4:30pm

OCC < Monday to Friday > : 8:30am - 4:30pm

EHS < Mon, Wed to Fri > : 4:30pm - 7:00pm

< Tuesdays > : 4:30pm - 8:00pm

Sunday and Public Holiday : CLOSED



Service Fees

SCCC : Free
EETC : \$148 annual fee
OCC : \$16/per 2 hours
EHS : \$13/per hour

All the above fees are based on the criteria set by SWD.

SUPPORTING SERVICES

Family support and Network

We organize training workshops and family activities, aiming to enhance parents' capabilities in caring and training their children as well as to foster mutual support and promote exchange of upbringing information amongst families.

Community Integration

Regular integration activities aim to expand the child's social experiences and to encourage community adaptation through interactive programs.

Occasional Child Care Service (OCC) & Extended Hours Service (EHS)

Our day respite service and extended hours service provide temporary relief to parents' stress from their long-term caring of their children.



Withdrawal Procedure Children could withdraw from our services by giving one-month written notice to our centre-in-charge/ social worker, in person or by written.

In general situation, termination of service occurs while:

- * The child's ability is age-appropriate, or has been enrolled in other subvented pre-school training services e.g. SCCC/EETC/ IP in KG cum CCC
- * Child aged 6 or promoted to primary one placement
- * If there are any special cases or needs, applicants could contact our social worker in person for referral of other suitable training services

SERVICE CAPACITY

SCCC : 24 service users

EETC : 66 service users

OCC : 2 service users;

EHS : 5 service users;

